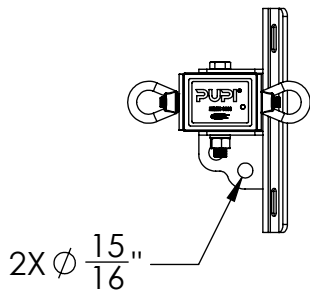
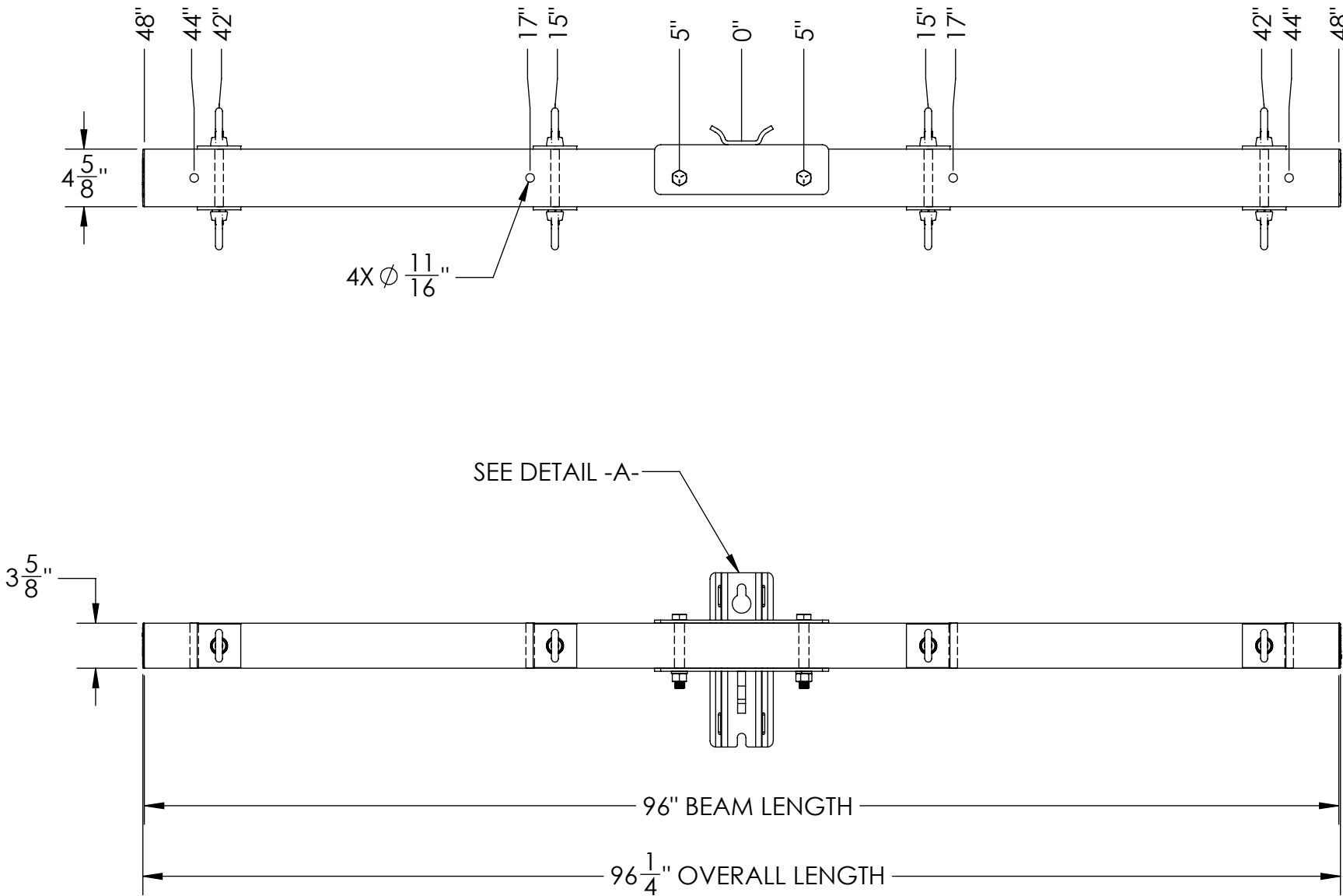
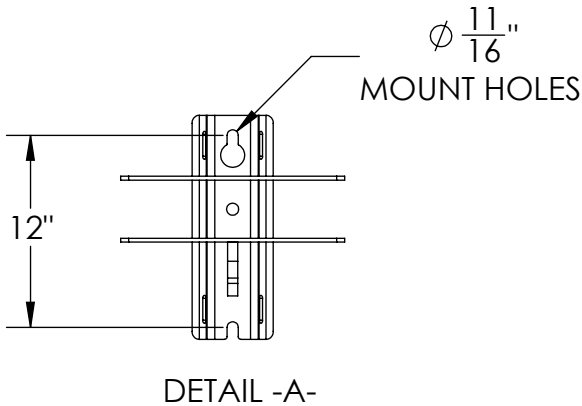


# REPRESENTATIVE OF SERIES 2000, SERIES 2500, AND SERIES 3000 ASSEMBLIES

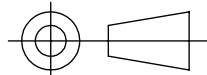


---UNLESS OTHERWISE SPECIFIED---  
DIMENSIONS ARE IN INCHES  
INTERPRET DIM AND TOL PER ASME Y14.5-2009

**PROPRIETARY AND CONFIDENTIAL**  
THE INFORMATION CONTAINED IN THIS DRAWING IS  
THE SOLE PROPERTY OF GEOTEK. ANY  
REPRODUCTION IN PART OR AS A WHOLE WITHOUT  
THE WRITTEN PERMISSION OF GEOTEK IS PROHIBITED.  
CUSTOMER SIGNATURE:

STATE:  
DRAWN: 2019-01-22  
CHECKED: 2019-01-23  
APPROVED:  
REPLACES:

THIRD ANGLE PROJECTION



DATE:



1421 SECOND AVE NW  
STEWARTVILLE, MN 55976  
(800) 533-1680  
www.geotekinc.com

DESCRIPTION:  
**DEADEND ASSEMBLY**  
**96 in, PUPI B7X**

SIZE: DWG. NO.  
**B DA----096E4B7X-**

SCALE: 1:12 | WEIGHT: 67 LBS

BEAM COLOR: REV:

0.0

SHEET 1 OF 1